

LMI SURREY

LABOUR MARKET INFORMATION

Ashford
Camberley
Chertsey
Dorking
Epsom and Ewell
Farnham
Godalming

Guildford
Haslemere
Horley
Leatherhead
Reigate and Redhill
Staines-upon-Thames
Woking

POPULATION OF
1,205,600

NUMBER OF PEOPLE EMPLOYED
605,700

2022

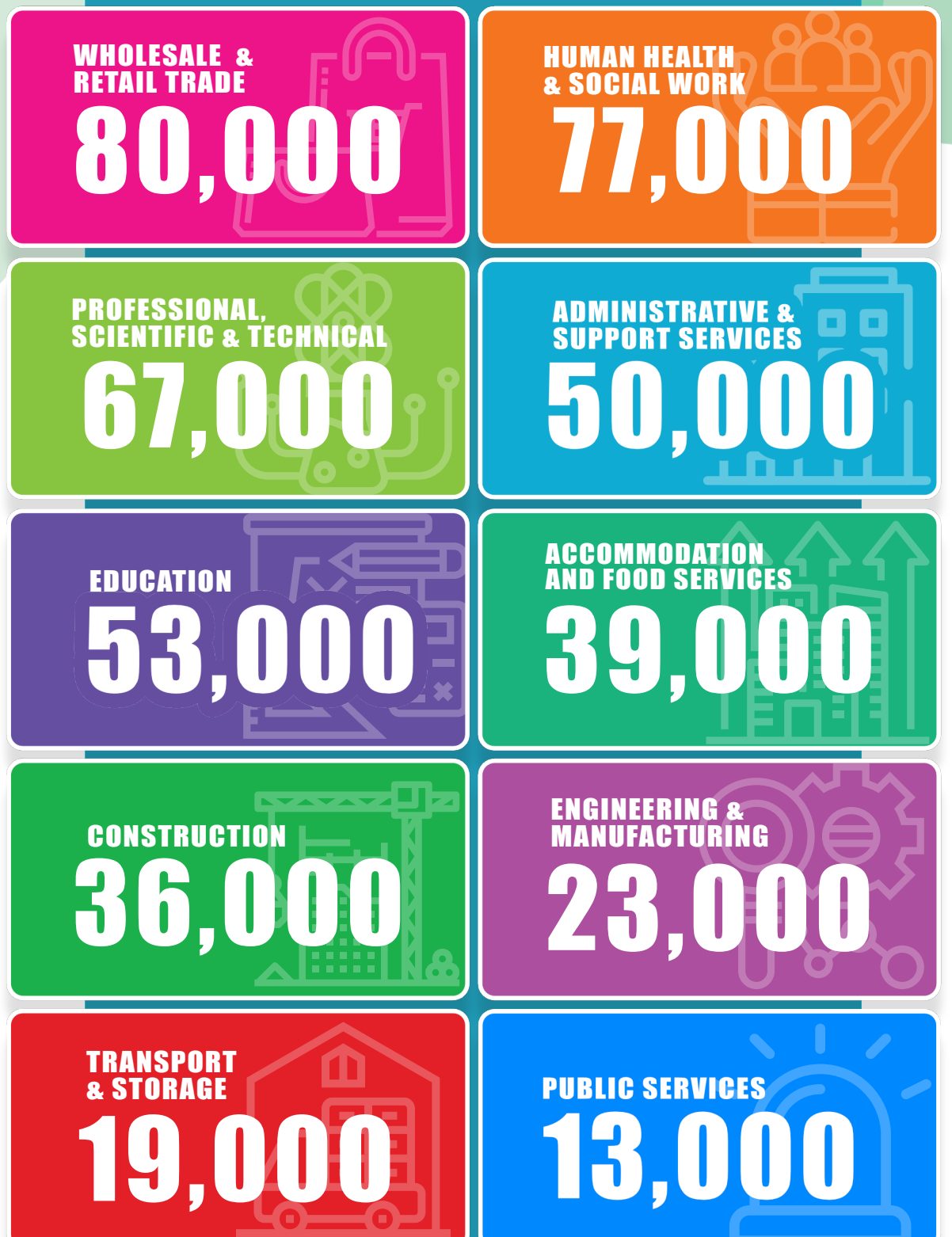
TOTAL NUMBER OF BUSINESSES
63,490

2022

COMPANIES ACROSS THE REGION



WHERE ARE THE MOST JOBS?



KEY GROWTH SECTORS

